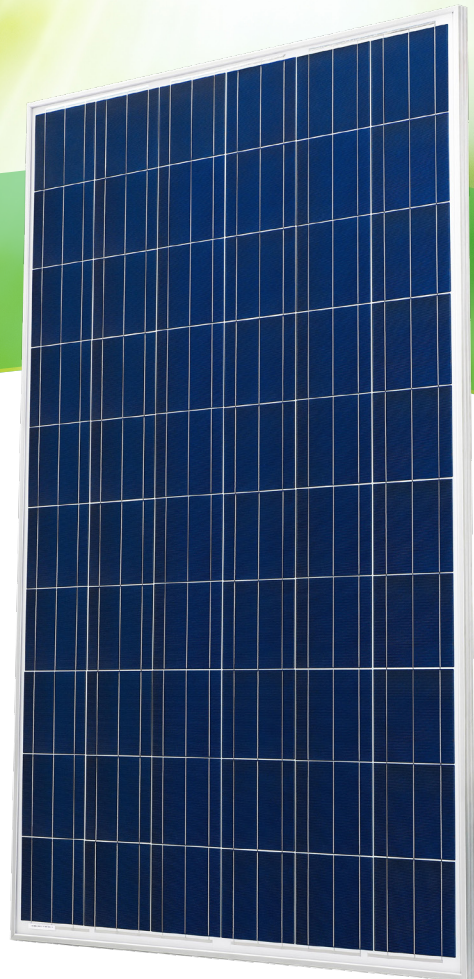


# Poly Series

## 275 Wp



Rooftop and Off-grid Design



Less sensitive to shading



Lower LCOE



Better low light performance

12

12 Year Warranty for Materials and Processing

25

25 Year Warranty for Extra Linear Power Output

### Comprehensive Certifications

- IEC 61215, IEC 61730 i.V.
- IEC TS 62941: Terrestrial photovoltaic (PV) modules - Guidelines for increased confidence in PV module design qualification and type approval



**16.53%**  
MAX MODULE  
EFFICIENCY

**0~+5W**  
POWER  
TOLERANCE

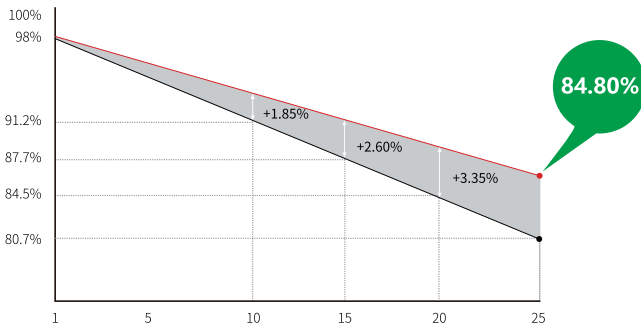
**<2%**  
FIRST YEAR  
POWER DEGRADATION

**0.55%**  
YEAR 2-25  
POWER DEGRADATION

**POLYCRYSTALLINE**  
Lower operating temperature

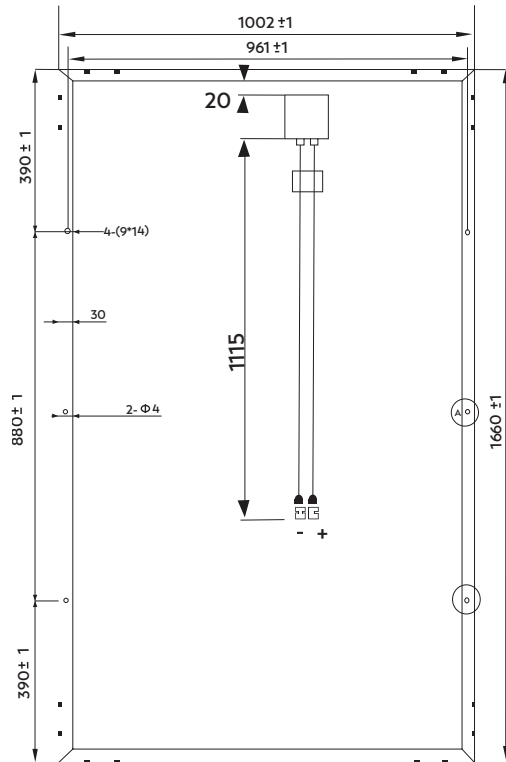
## Additional Value

### 25 Year Power Warranty



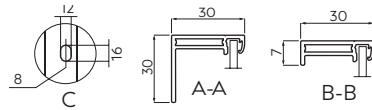
## Mechanical Parameters

Cell Orientation	60(6*10)
Junction Box	IP65, 3 bypass-diodes
Output Cable	1100mm, 4mm <sup>2</sup>
Glass	3.2mm solar glass
Frame	Anodized aluminium
Weight	18.5kg
Dimensions (mm)	1660*1002*30



1660x1002x30

units in mm



## Electrical Characteristics

Module Type	Testing Condition	Maximum Power	Open circuit voltage(V)	Short circuit current (A)	Voltage at Maximum power (V)	Current at Maximum Power (A)	Module Efficiency
275WP	STC	275	38.49	9.08	32.21	8.45	16.53%

## Operating Parameters

Operational Temp	minus 40°C to 85°C
Power Output Tolerance	0-+5Wp
Maximum System Voltage	1000V DC
Maximum Series Fuse Rating	16A
Nominal Operating Cell Temperature	20°C

## Temperature Ratings STC

Temperature Coefficient of is	(+)0,04%/K
Temperature Coefficient of Voc	(-)0,30%/K
Temperature Coefficient of Pmax	(-)0,40%/K