



Carbon 12-200

Advanced Lead Carbon



Superior Deep Cycle Technology



Exceptional Performance



Exceptional Cost Efficiency



Super-Fast charge/discharge performance



High Temperature Tolerance



12 Year Design Life

Warranty Information



2 Year Warranty

Comprehensive Certificates

- IEC 6142, BS EN 61427
- ISO 9001: Quality management systems
- ISO 14001: Environmental management systems
- ISO 45001



EASY

INSTALLATION AND
MAINTENANCE

ROBUST

FAST CHARGE/
DISCHARGE

LONGER LIFESPAN

12 YEAR DESIGN LIFE
2 YEAR WARRANTY

HIGH CYCLE LIFE

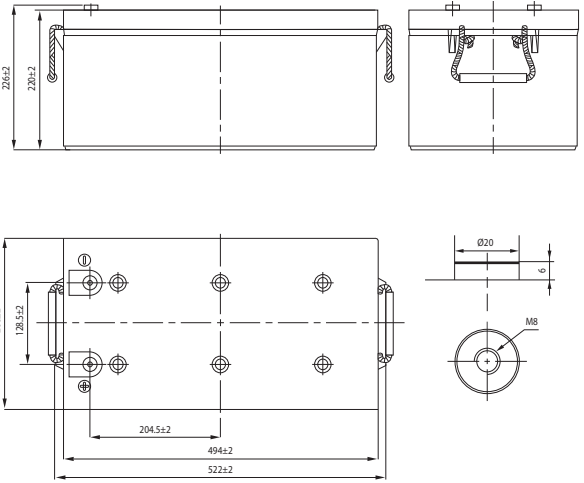
>4 800 CYCLE @ 40% DoD @ 25°
>3 200 CYCLE @ 60% DoD @ 25°

Mechanical Characteristics

| | |
|--------------------|-----------------------|
| Dimensions | 522mm x 268mm x 226mm |
| Weight | Approx. 75.6Kg |
| Container Material | ABS |
| Terminal | M8 |

Electrical Characteristics

| | |
|---------------------------|---|
| Nominal Capacity | 200Ah |
| Rated Voltage | 12V |
| Nominal Energy | 2400Wh |
| Maximum Discharge Current | 100A |
| Maximum Charge Current | 40,0A |
| Expected Cycle Life | >8800 @ 20% DoD >4800 @ 40% DoD >3200 @ 60% DoD |
| Internal Resistance | Approx. 4,0mΩ |



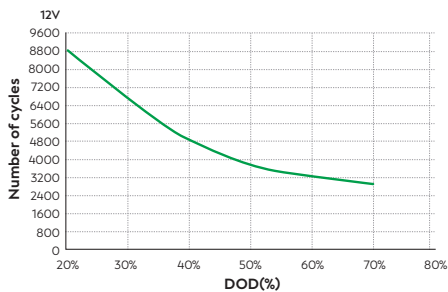
Operating Conditions

| | |
|-------------------------------|---|
| Operating Temperatures | Charge: -20°C to 40°C Discharge: -20°C to 55°C Storage: -20°C to 50°C |
| Nominal Operating Temperature | 25°C ± 3°C |
| Self Discharge | ≤3,5% per month at 25°C |

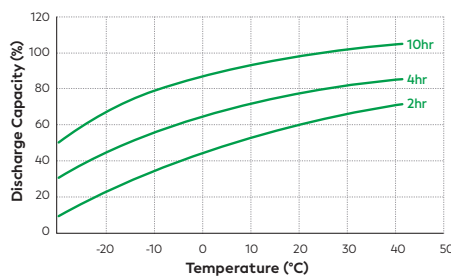
Constant Current Discharge @ 25 °C

| F.V/Time | 30min | 1h | 2h | 3h | 4h | 5h | 6h | 7h | 8h | 10h | 20h |
|------------|-------|-------|------|------|------|------|------|------|------|------|------|
| 1,90V/cell | 118,2 | 86 | 53,6 | 41,6 | 35,2 | 29,7 | 25,9 | 23 | 21,3 | 17,6 | 9,4 |
| 1,85V/cell | 140,8 | 97,8 | 62,2 | 49 | 41,6 | 34,7 | 30,1 | 26,3 | 23,8 | 19,8 | 10,5 |
| 1,80V/cell | 157,6 | 107,5 | 66,2 | 50,7 | 42,4 | 35,4 | 30,5 | 26,8 | 24,4 | 20 | 10,7 |
| 1,75V/cell | 167,3 | 111,1 | 67 | 51,9 | 43,2 | 35,8 | 30,7 | 27 | 24,6 | 20,4 | 10,8 |

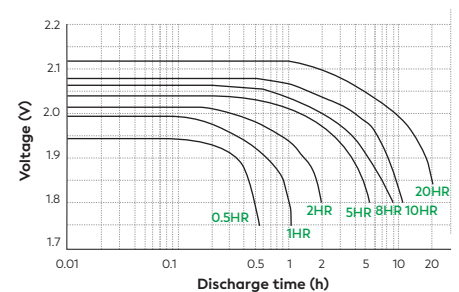
Cycle Life in relation to DOD



Temperature effects in relation to capacity



Discharge Characteristics



User Defined Settings

| | 12V Application | 24V Application | 48V Application |
|---------------------|-----------------|-----------------|-----------------|
| Bulk Charge | 14.4V | 28.8V | 57.6V |
| Float Charge | 13.8V | 27.6V | 55.2V |
| Equalisation Charge | 13.3V | 26.6V | 53.2V |